




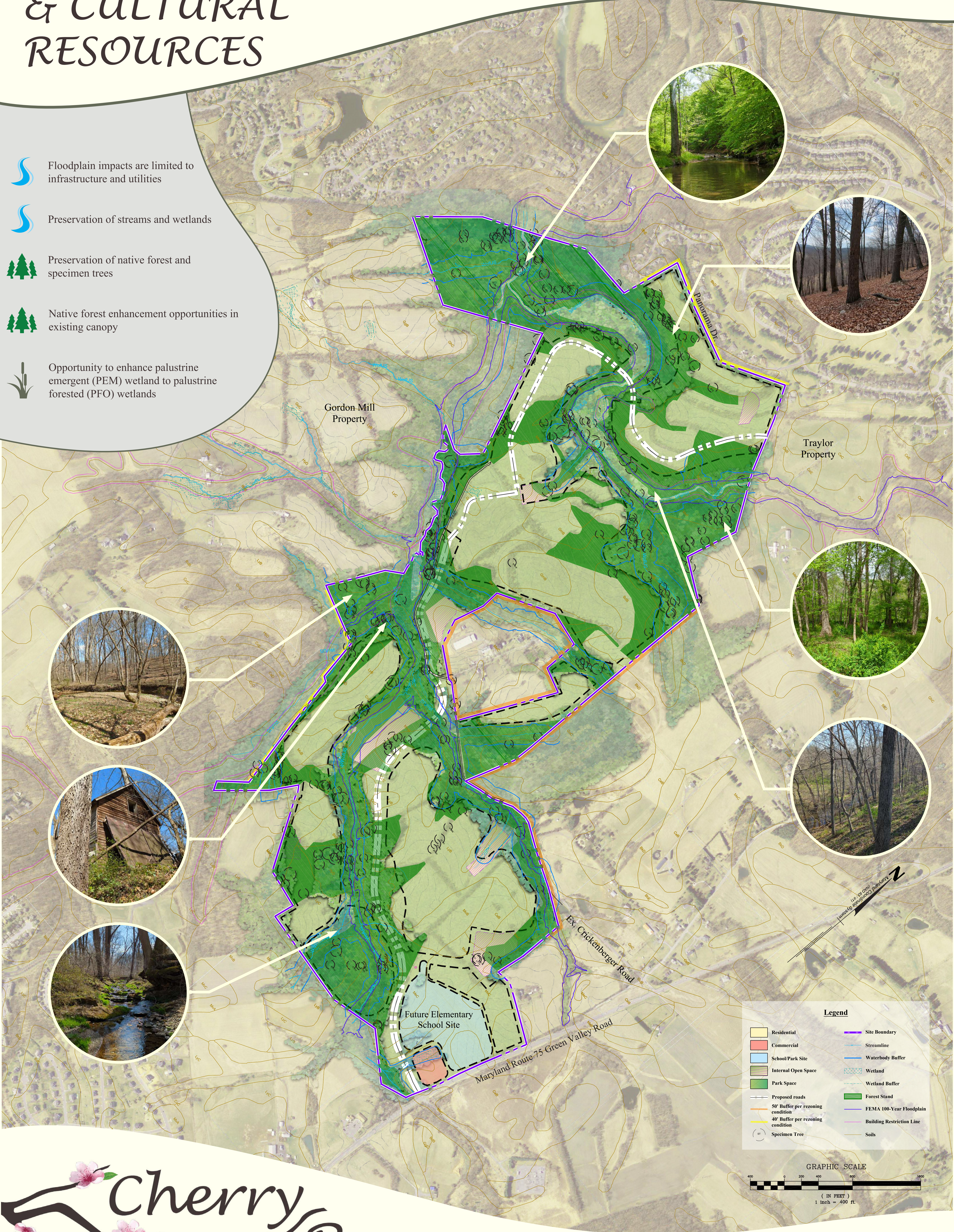


ENVIRONMENTAL & CULTURAL RESOURCES

-  Floodplain impacts are limited to infrastructure and utilities
-  Preservation of streams and wetlands
-  Preservation of native forest and specimen trees
-  Native forest enhancement opportunities in existing canopy
-  Opportunity to enhance palustrine emergent (PEM) wetland to palustrine forested (PFO) wetlands



Cherry Run



Eugene B. Casey Foundation

RODGERS CONSULTING

July 2023 | Community Outreach Meeting
The graphics & data are based upon the sketch plan and general development. Plan is subject to change as part of any preliminary/final site plan in the future.